

LSD Deputy Report June 7 – June 13

Randy Michaud

General Comments:

- Work is going well
- No injuries or close calls
- Coordination between PEPPPO and LSD work is on track
- Afternoon tunnel lockups have generally been minimally delayed.

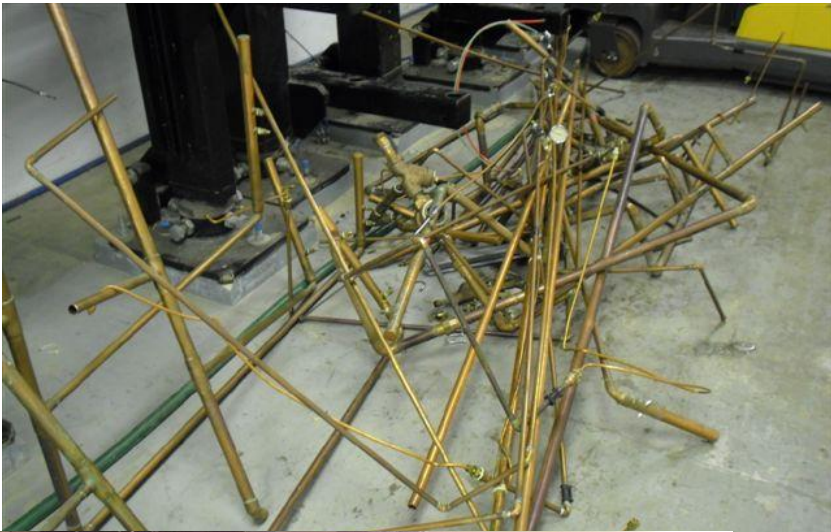
Specifics:

- 2L23 hooked up, cooled down, & commissioning underway. (2 day delay for PSS 2L23 certification)
- 2L22 installed, roll error corrected, and waveguides installed.
- Vacuum girder rebuilds going very well.
- 1R and 2S magnets, girders, etc. removed. 1R stands coming out.
- 2R coordination for disconnects and disassembly underway. Moving to 1S.
- S&A South Linac network measurements began.
- PEPPPO successfully doing PEPPPO.



2S on 6/12/12

1R on 6/12 & 6/13

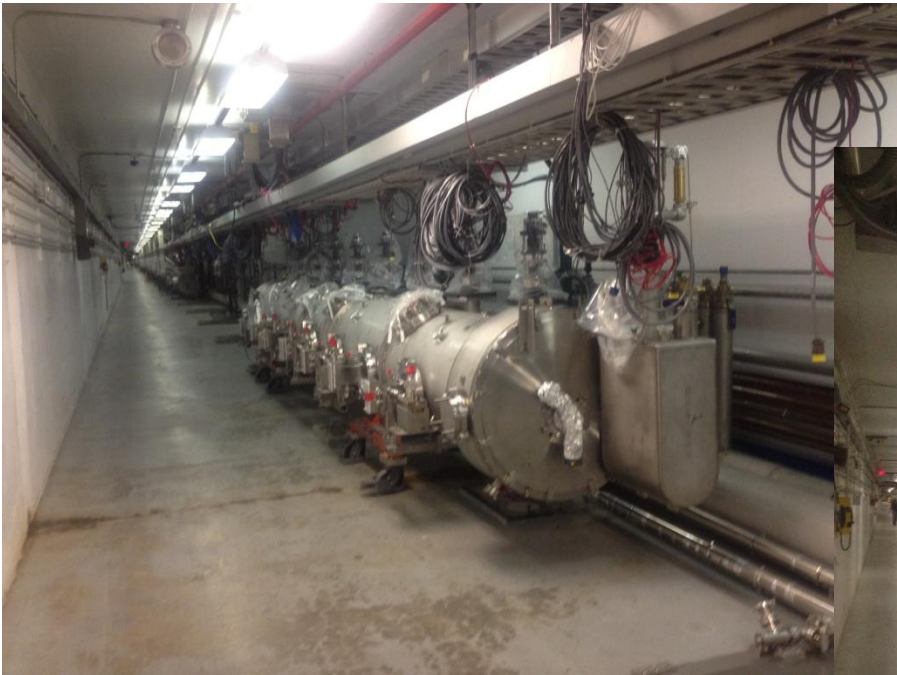




2R disconnect

Component labeling





C100 -3 parked @ 1L24



2L22 & 2L23



SL network

SAD Calendar

Scheduled Accelerator Down

Week 24 2012

View ATLis Work Map Help

Key

- Good Plan
- Tentative Plan
- Major Event
- Incomplete Task
- Lock Up
- Utility Interruption
- Radcon Group
- Special Support
- Subset
- New/Changed
- ATLis Task

Login

	Sun	M	T	W	T	F	Sat
24	2012-06-10	11	12	13	14	15	16
Owl	LSD: Michaud PD: Bickley PEPPo Run 24/7	LSD: Michaud PD: Bickley PEPPo run	LSD: Michaud PD: Bickley PEPPo run	LSD: Michaud PD: Bickley PEPPo run	LSD: Napier PEPPo run	LSD: Napier PEPPo run	LSD: Napier PEPPo run
Day	PEPPo Run 24/7	2R demo walk IPM0L03-0R07 bpm 2S+ dismantle NW Recomb bpm VBV lines to copper Substation Tie Feeder FEL Run C100-3/1L24 inst	0900 Tunnel training MCC Telephone TS NL RF: new PSS 2S+ dismantle 2R+ removal W2/BSY Box supply Network Survey (SL) Substation Tie Feeder FEL Run 1315 Tour: NASA	0L07 mag intck j-box Telephone TS NL RF: new PSS 1R stand, and plate 2L25-7 WG press 2R+ removal Network Survey (SL) Substation Tie Feeder FEL Run	1400 Load Shed Test ESR Warm Up NL RF: new PSS 1R stand, and plate 2L22 4K cooldn 2L25-7 WG press 2R+ removal 2L22 inst Network Survey (SL) Substation Tie Feeder 1500 ODH alarms: FEL Exp reconfig Tour: W&M Tour: MYRRAH	VBV lines to copper 1R stand, and plate 2R+ removal Network Survey (SL) Substation Tie Feeder FEL Run	PEPPo run
Swing	PEPPo Run 24/7	PEPPo run SLinac/2L23 recert C100-5/2L23 comm	PEPPo run PSS - Jumper @2L25 C100-5/2L23 comm	PEPPo run C100-5/2L23 comm	PEPPo run C100-5/2L23 comm	PEPPo run C100-5/2L23 comm	PEPPo run C100-5/2L23
25	2012-06-17	18	19	20	21	22	23
Owl	LSD: Napier PEPPo run	LSD: Napier PEPPo run	LSD: Napier PEPPo run	LSD: Napier PEPPo run	LSD: Napier PEPPo run	LSD: Napier PEPPo run	LSD: Napier PEPPo run
Day	PEPPo run	FEL Run 1R stand, and plate 2L22 2K pumpdn 2L22 inst 2R+ removal Substation Tie Feeder	FEL Run 1R stand, and plate 2L22 inst 2R+ removal Substation Tie Feeder	FEL Run 1R stand, and plate 2L22 inst 2R+ removal Substation Tie Feeder Tour: DOE CFO	FEL Run 1R stand, and plate 2L22 inst 2R+ removal Substation Tie Feeder	FEL Run 2L22 inst 2R+ removal Substation Tie Feeder	PEPPo run Telephone
Swing	PEPPo run C100-5/2L23	PEPPo run C100-04 2L22 commiss C100-5/2L23 comm	PEPPo run C100-04 2L22 C100-5/2L23 comm	PEPPo run C100-04 2L22 C100-5/2L23 comm	PEPPo run C100-04 2L22 C100-5/2L23 comm	PEPPo run C100-04 2L22 C100-5/2L23 comm	PEPPo run C100-5/2L23
26	2012-06-24	25	26	27	28	29	30
Owl	LSD: Napier	LSD: Napier	LSD: Napier	LSD: Napier	LSD: Pilot	LSD: Pilot	LSD: Pilot